



Product Function

CR-M4104D2 is a slide design delegate unit, can achieve voting, election, Large LCD display can display the management information itself and the result of voting. The black and silver color design make it looks fashion and modern.

Product features

- slide design, Black and silver color and dustproof design.
- 5 buttons used to vote and election.
- Earphone connector, adjust volume easily.
- The loudspeaker will automatically mute to avoid howling. when the microphone turns on.
- Pluggable microphone with twin color ring indicator.
- Button indicator light has hint function of voting.
- Has application function of voting and discussing.
- LCD display the result and message of the system.

PARAMETER

Power supply	DC24V supplied by the control controller	Intercommunication	DIN 8-PIN
Power consumption	3W	Earphone output	9dBu, 8-32Ω, 3.5mm
Loudspeaker power	2W	Soniferous types	Cordiform capacitor
Directional pattern	Cardioids	Crosstalk attenuation	>80dB
SNR	>80dB	Distortion	<0.1%
Frequency response	60-16KHz	Sensitivity	-22dBv/Pa
Size	218L×138W×56H(mm)	Color	Black



PRODUCT INTRODUCTION
DIGITAL CONFERENCE SYSTEM PRODUCTS

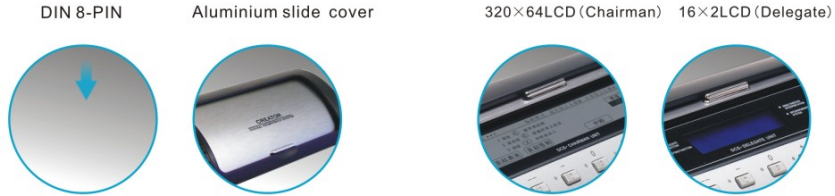
M4102/04D2 | Slide cover Chairman unit/Delegate unit



Delegate Unit



Chairman Unit

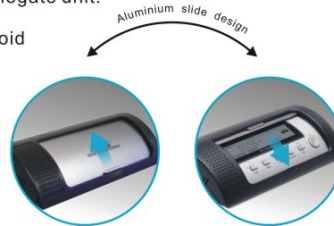


Product Function

CR-M4102D2 chairman unit, with slide design, has the full power to control the meeting and can achieve voting, election, display the voting result, speakers' information. The black and silver color design make it looks fashion and modern.

Product features

- slide design, Black and silver color and dust proof design.
- 5 buttons used to vote and election.
- Chairman unit can display the voting result and the speakers information state.
- Chairman unit can start or stop the voting, pause and cancel the delegate unit.
- Earphone connector, adjust volume easily.
- Has the power to agree or cancel the application from delegate unit.
- Chairman unit has no limited of the number of speakers.
- The flat panel loudspeaker will automatically mute to avoid howling when the microphone turns on.
- Has the priority to control the whole meeting.
- Button indicator light has hint function of voting.
- Can apply or cancel an application.
- Twin color indicator light.



PARAMETER

Power supply	DC24V supplied by the control controller	Intercommunication	DIN 8-PIN
Power consumption	3W	Earphone output	9dBu, 8-32Ω, 3.5mm
Loudspeaker power	2W	Soniferous types	Cordiform capacitor
Directional pattern	Cardioids	Crosstalk attenuation	>80dB
SNR	>80dB	Distortion	<0.1%
Frequency response	60-16KHz	Sensitivity	-22dBv/Pa
Size	218L×138W×56H(mm)	Color	Black

